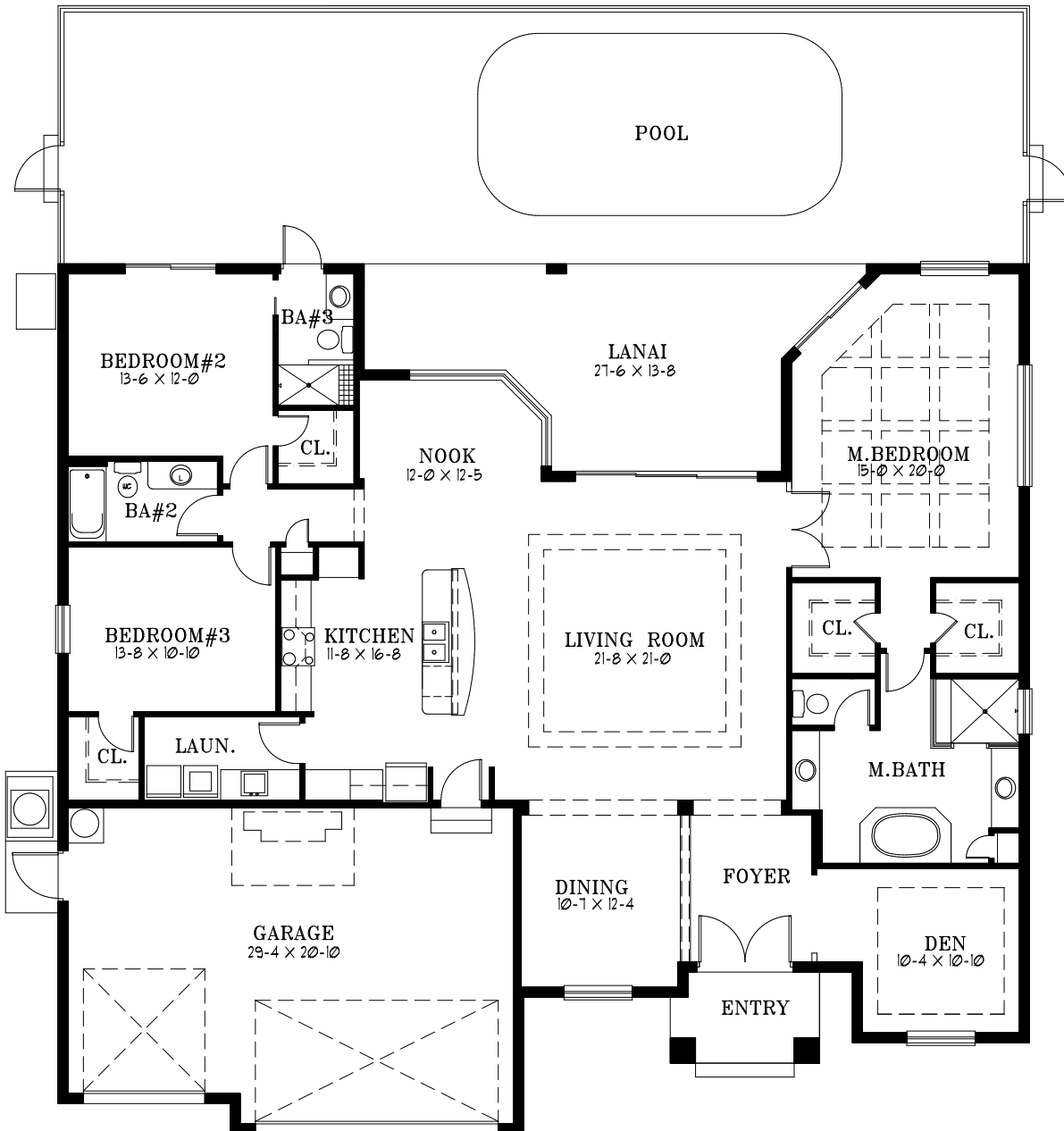




The Sanibel Island



**3 bedroom | 3 Bath
3 Car Garage**

Living Area 2417 S.F.
 Lanai 318 S.F.
 Entry 57 S.F.
 Garage 629 S.F.
Total Area 3421 S.F.

Sanibel Island Standard Features

Exterior Features

Architectural Asphalt Shingles - 30 year warranty
Three Garden Hose Bibs
Aluminum Fascia, Vinyl Soffit
Textured Stucco Exterior with Raised Accent Bands
Truss Covered Lanai with Concrete Floor
Textured Stucco Lanai Ceiling
Finished Interior Garage Walls
Two Coats Premium Paint on Stucco
Two Toned Exterior Paint (Body and Trim)
Rolled Edge Steel Hurricane Shutters
Paved Driveway, Sidewalk and Concrete Equipment Pads (up to 1,100 SF max)
3 Car Garage with Pull Down Attic Stairs
7' Raised Panel Steel Overhead Garage Door with Openers
Pillared Entry with Concrete Stoop
Three Exterior GFI Protected Outlets
Steel Insulated Exterior Doors
8' Glass Double Entry Front Door
Standard Landscape Package
Insulated Low E Windows and Sliders

Interior Features

5-1/4" Wood Base Throughout
3 - 1/4" Wood Cased Doors
Wood Window Sills
8' Interior Doors
Minimum 9' - 4" Ceiling Height
13' Ceiling in Entry and Dining Room with Crown Molding
11' Ceiling In Living Room and Kitchen With Stepped Ceilings and Crown Molding
Stepped Ceilings in Master Bedroom, Great Room, and Study with Crown Molding
Brushed Nickel Lever Door Handles
Textured Walls and Ceilings
Shaw Brand Hidalgo Series Ceramic Tile or equal
Shaw Brand Forest Grove Series Carpet or equal
Custom Interior Flat Wall Paint and Semi Gloss Trim/Door Paint
Ventilated Wire Closet Shelving
Walk in Closets and Linen Closets Per Plan

Kitchen Features

Wood Cabinets with Adjustable Shelves
42" Upper Cabinets with 3" Crown Molding
Bumped and Staggered Over Range Hood
Stacked Microwave over Wall Oven
3 CM Level 1 Granite Countertops
Stainless Steel Undermount Double Bowl Kitchen Sink
Brushed Nickel Moen Faucet with Pull Out Sprayer
Brushed Nickel Cabinet Knobs or Handles
1/2 HP Garbage Disposal
Stainless Whirlpool Appliances (up to \$4,500)
Water Line to Refrigerator
Cabinet Pantry with Adjustable Shelves
Soft Close Doors and Drawers
Undermount Drawer Glides

Bathroom Features

Wood Cabinets with Adjustable Shelves
Comfort Height Vanities
3 CM Level 1 Granite Countertops
Undermount Vanity Sinks
Soft Close Doors and Drawers
Full Width Vanity Mirrors
Moen Brushed Nickel Faucets
Drop in Master Bath Tub with Tiled Tub Deck
Moen Brushed Nickel Roman Tub Faucet
Brushed Nickel Cabinet Knobs and Handles
Walk in Master Shower
Pool Bath with Walk in Shower

Plumbing Features

50 Gallon Quick Recovery Energy-Miser Hot Water Heater
Free standing Laundry tub w/standard faucet
Washer Connection
Elongated Toilets

Electric Features

6 Ceiling Fan/Light openings
Inter-linked Smoke Detectors w/battery Back-up
Recessed Can Lighting per plan
Standard Light Fixture and Paddle Fan package
200 Amp Main Service Panel
Washer/Dryer Connection
Door Bell Chime
5 Pre wired Telephone and 5 Pre wired Cable

Construction/Energy Features

8" Block Walls
Monolithic Concrete Slab with Vapor Barrier
Steel Reinforced Concrete Footing
Engineered Roof Truss System
Current Hurricane and Wind Requirements
Minimum 9'- 4" Wall Height
High Efficiency 15 SEER Air Conditioning
Automatic Float Shut Off on A/C to Prevent Flooding
Air Conditioning Vents in Walk in Closets
Insulated Heating and Cooling Ducts
Cold Air Returns in All Bedrooms
R-30 Blown & Batt Ceiling Insulation
R-13 Batt Insulation Between Garage and Living Area
R-19 Batt Insulation at Knee Walls
R- 4.2 Exterior Wall Moisture Barrier
Off Ridge Vent Attic Ventilation
Continuous Soffit Vents
Taexx Pest Control

Additional Features Included

Outdoor Kitchen Pre-Wire and Plumbing Rough
Electric Power and Water Line to Seawall (30 amp) if applicable
Recess Cans in Front Elevation Soffit
Recess Cans in Master Bedroom ceiling
Full Height Vanity Mirrors
90 Amp Pool Panel

Property (Standard 80 x 125 Lot)

Building Permits included
Surveys and Site Plans included
Sewer piping from house to Sewer main
Water piping from house to water meter
Overhead Electric Connection
Clearing, Fill and Grading Allowance



Harbor Home Builders

Tel 941.629.8886 | Fax 941.629.2986 | 950 Tamiami Trail, Unit 101 | Port Charlotte, FL 33953 | www.harborhomebuilders.com | Lic. #CBC 1257527

Rendering and floorplan are for illustrative purposes only and may not reflect actual characteristics of the actual home. Model may be shown with options and upgrades which may or may not be included in the base price. Harbor Home Builders, LLC reserves the right of price, plan or specification change without notice or prior obligation.